

EXPO VILLAGE CASCINA MERLATA

HOTEL

HOSPITALITY FOR TEMPORARY LIVING

LINEE GUIDA



POLITECNICO
DI MILANO

INTERNI / ALLESTIMENTI

**> INDICAZIONI EMERSE >>>>> ABITARE
* generali TEMPORANEO**

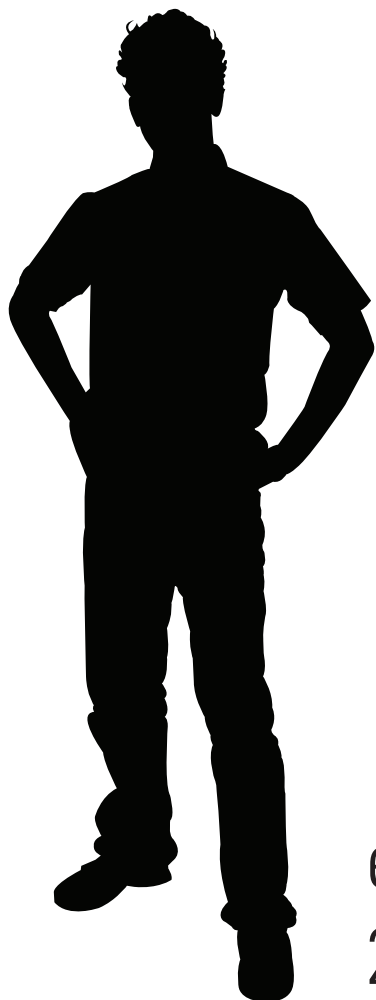
- . target multiculturale
- . target giovane
- . target informale

> INDICAZIONI EMERSE
 * generali
. TARGET MULTICULTURALE



'Humanae', Angèlica Dass, 2012

> INDICAZIONI EMERSE
* generali
. TARGET GIOVANE



età media
25/35 anni





> INDICAZIONI EMERSE
* generali
. **TARGET INFORMALE**



> ABITARE TEMPORANEO

COMPLEMENTI

FINITURE

SPAZIO ABITATIVO

> ABITARE TEMPORANEO
. LINEE GUIDA

. INFORMALITA'

- . COLORE
- . SCELTA DEI MATERIALI
- . TRASFORMABILITA'
- . FLESSIBILITA'
- . ELEMENTI DI RECUPERO

. SOSTENIBILITA'

- . RIUTILIZZABILE
- . RICICLABILE
- . DISASSEMBLABILE
- . LOW COST

. MADE IN ITALY

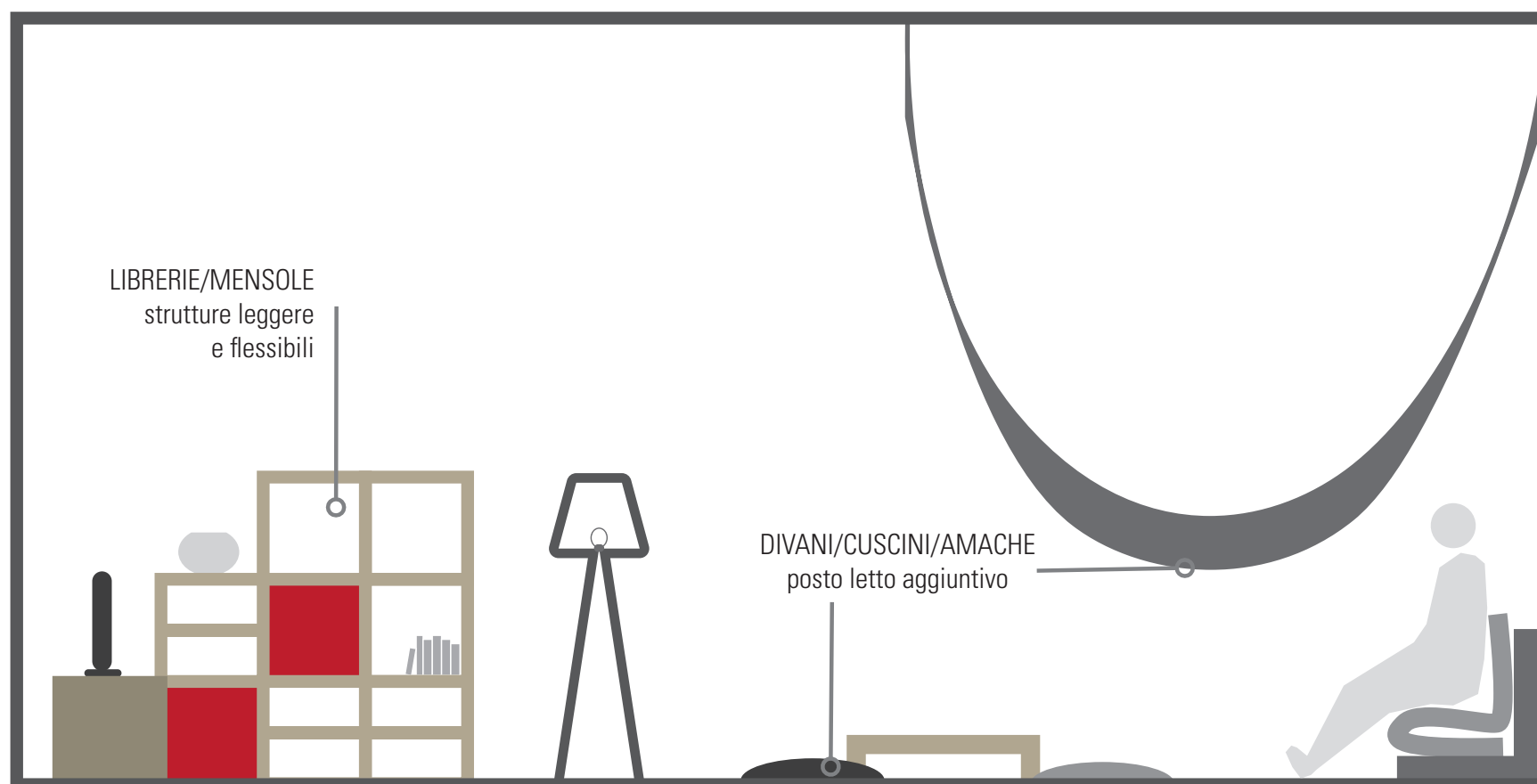
- . CO-BRANDING
- . DESIGN
- . GIOVANI DESIGNER

. QUALITA' ESTETICA



Sciangai, Zanotta, 1973

> ABITARE TEMPORANEO
. LINEE GUIDA
. **ZONA GIORNO**



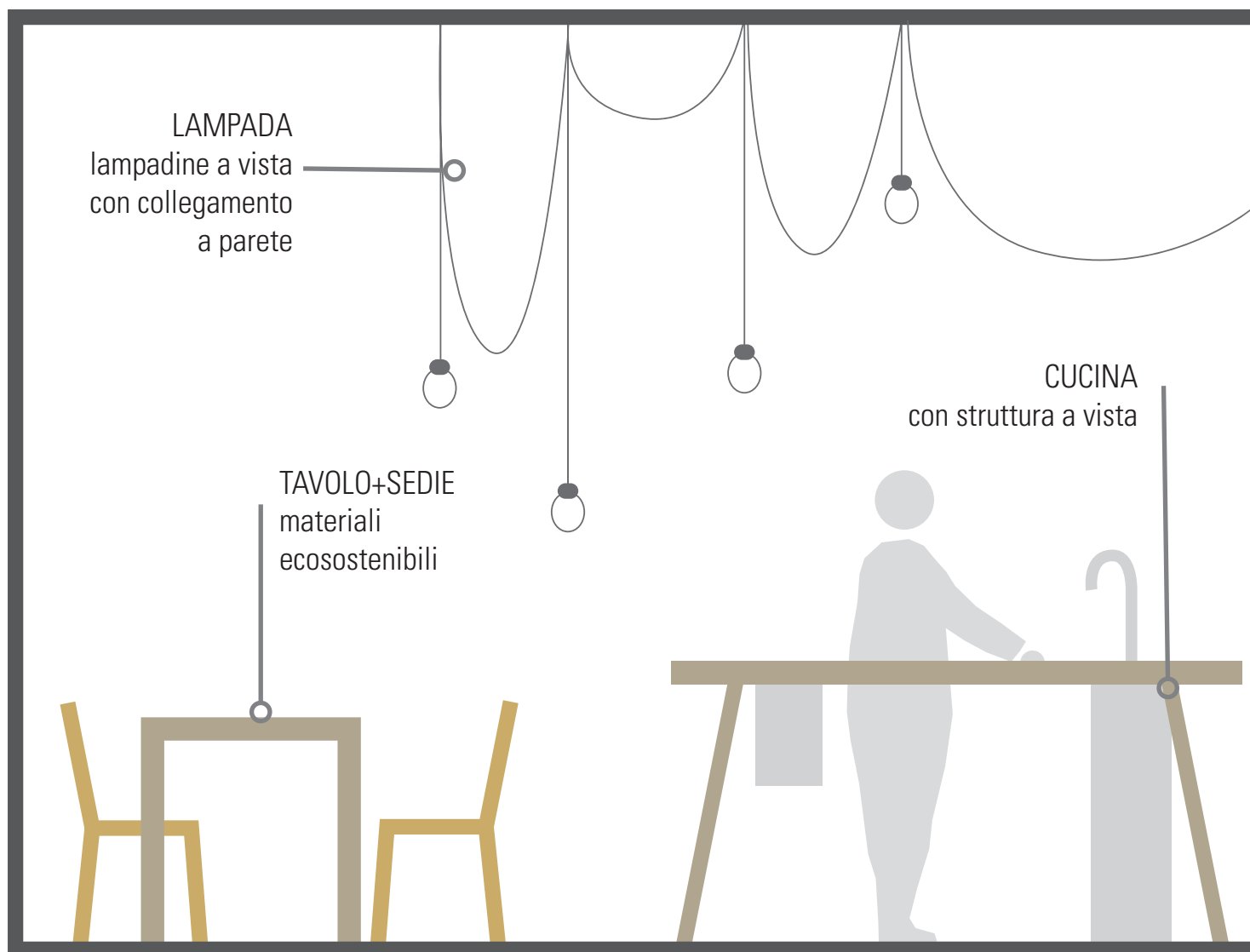
TIPOLOGIA A1 / B

tavolo
sedute
divano uso letto
poltrona
tavolino
mobile tv
televisione
apparecchi illuminanti

> ABITARE TEMPORANEO
. LINEE GUIDA
. **CUCINA**

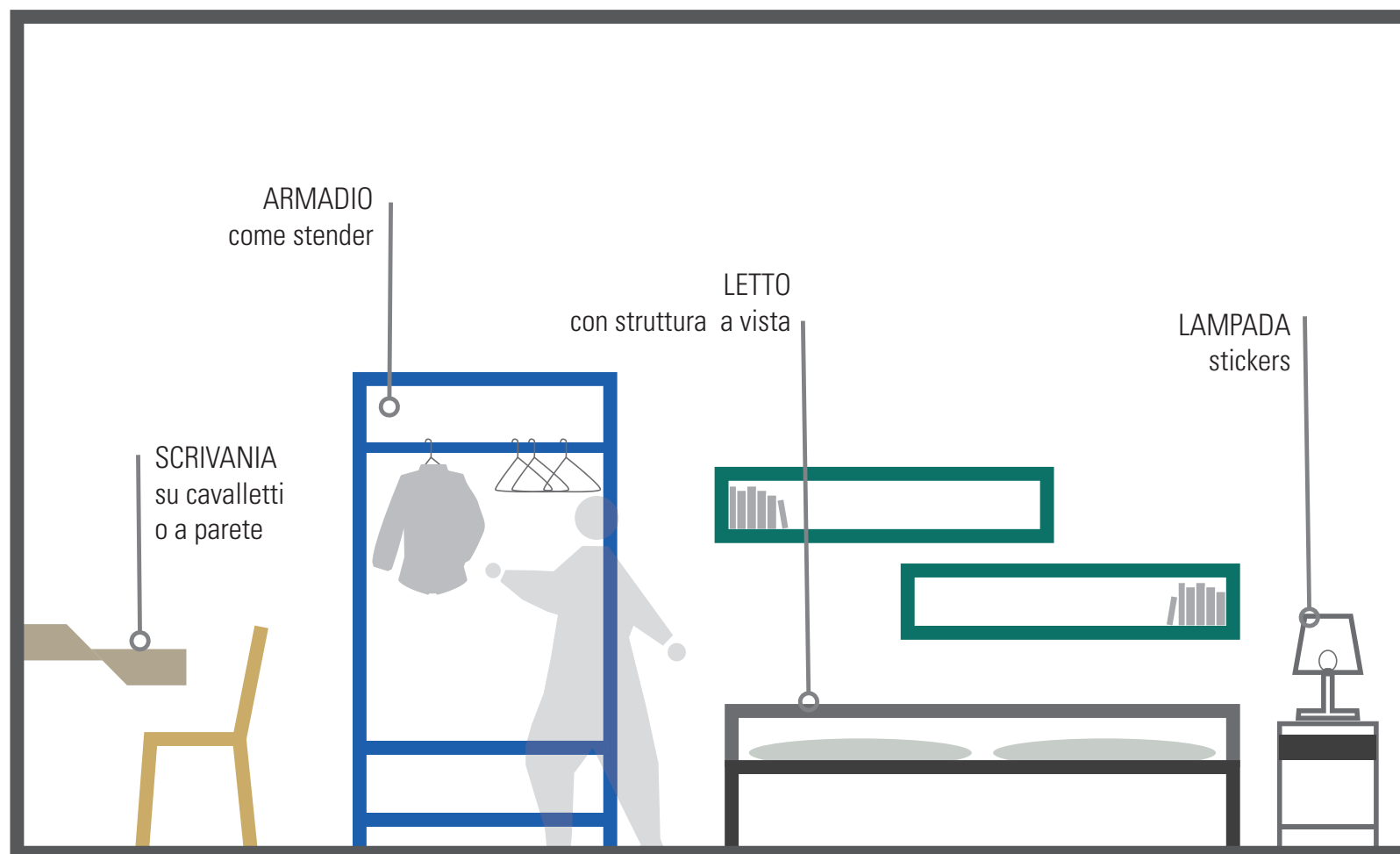
APPARTAMENTO A / A1 / B

piano cottura da appoggio 4 piastre
lavello vasca
cappa a vista
frigorifero libera installazione
microonde libera installazione
cassettiera
tavolo
sedute
apparecchi illuminanti



> ABITARE TEMPORANEO
. LINEE GUIDA

. **ZONA NOTTE** (singola o doppia)



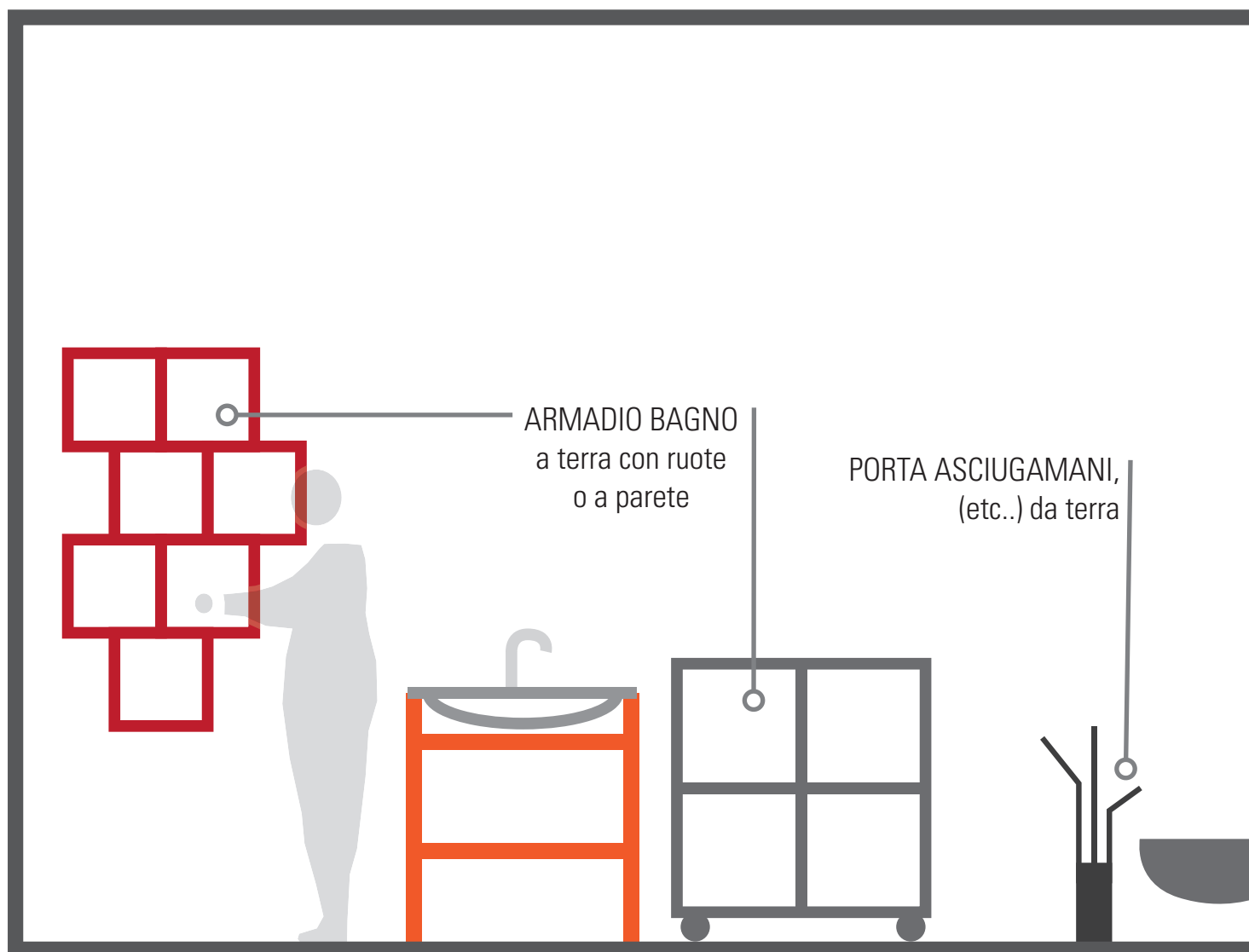
APPARTAMENTO A / A1 / B

armadiatura 2/3 moduli
cassettiera
scrittoio
seduta
1/2 letti singoli (componibili)
1/2 comodini
apparecchi illuminanti

> ABITARE TEMPORANEO
. LINEE GUIDA
. **BAGNO**

APPARTAMENTO A / A1 / B

lavabo
wc
piatto doccia
rubinetteria
specchiera
contenitore portaoggetti
apparecchi illuminanti



> ABITARE TEMPORANEO

. piante

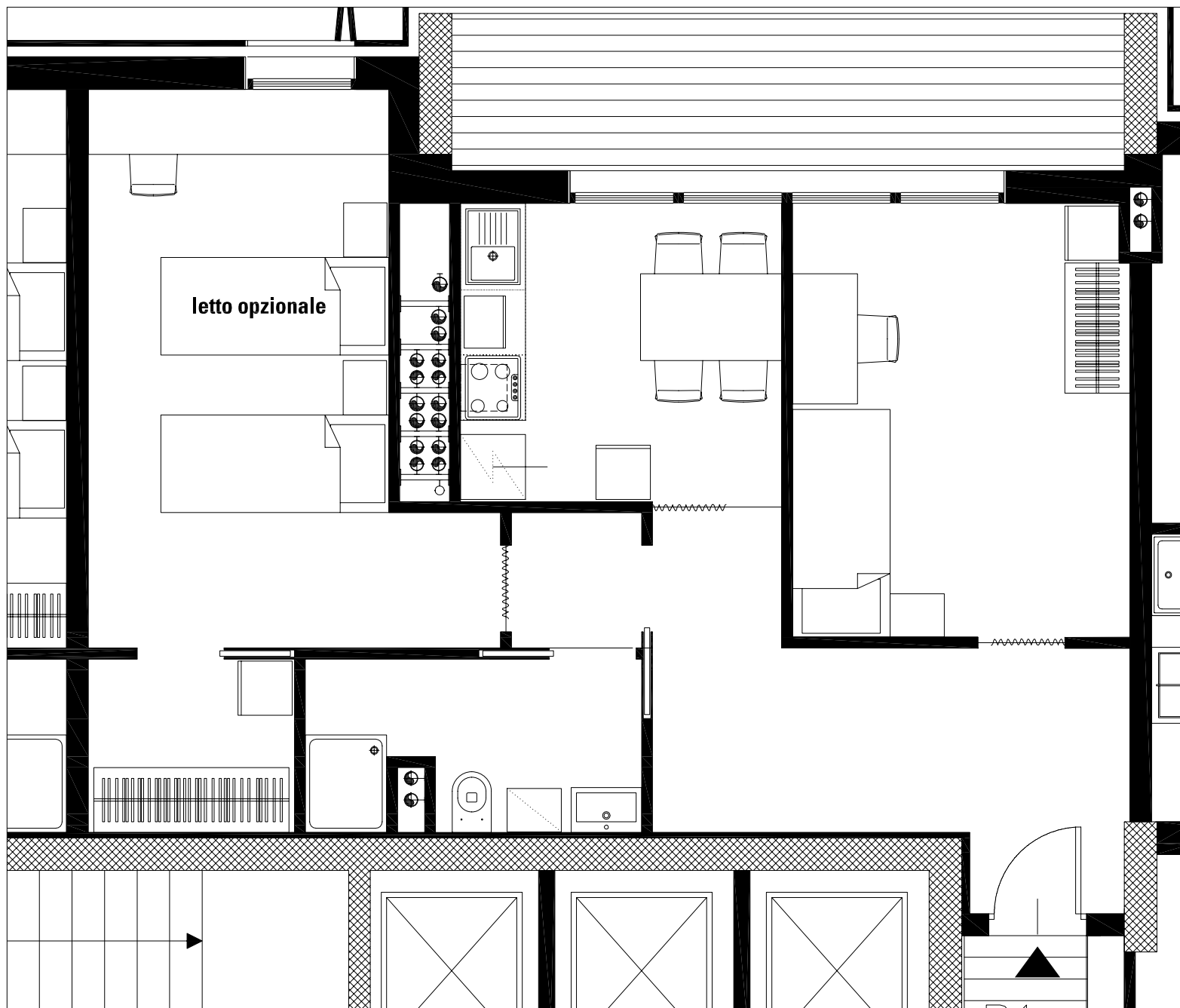
. visualizzazioni

> 2 DESTINATARI:
STAFF / DELEGAZIONI

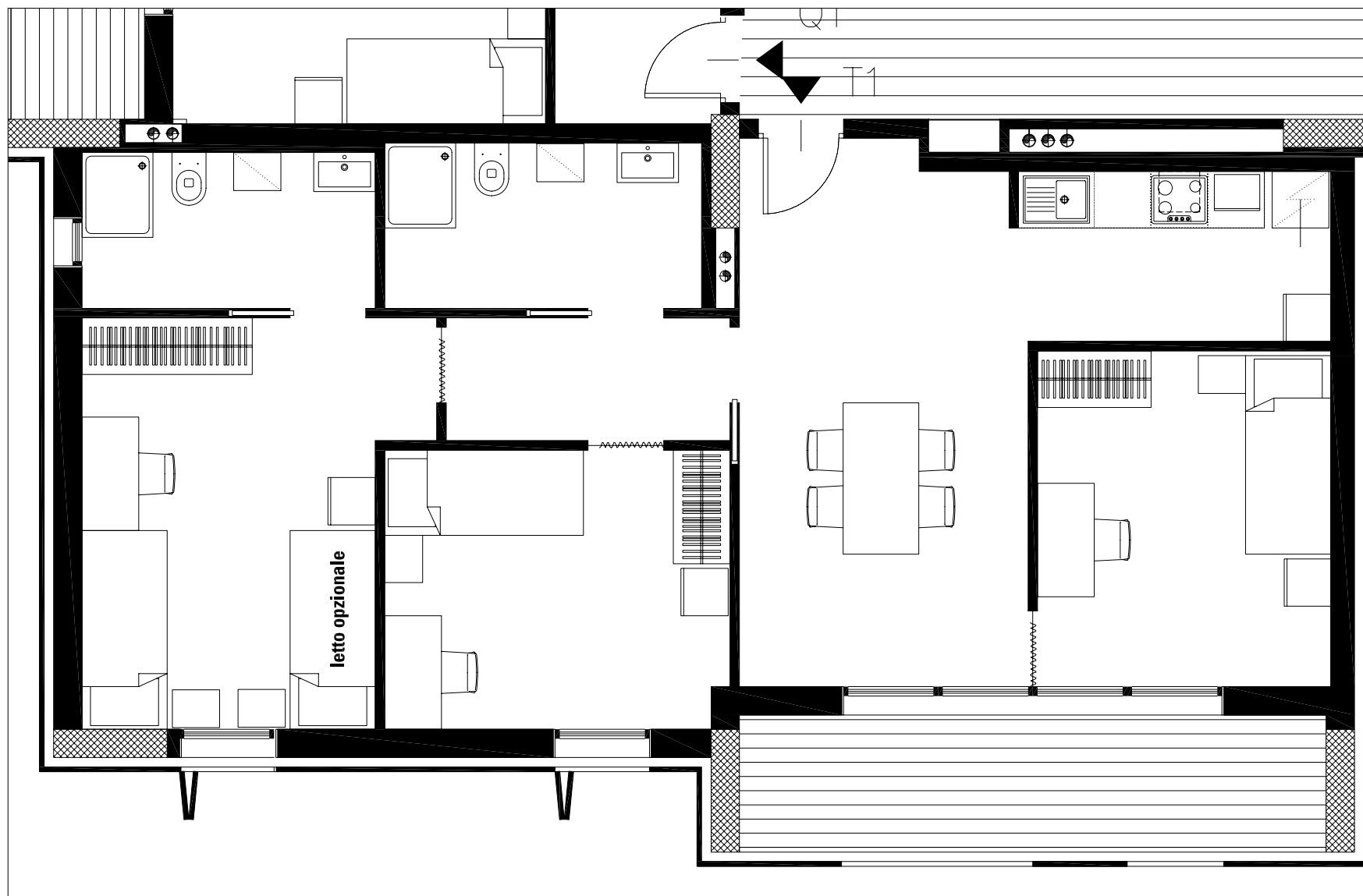
> 3 TIPOLOGIE:
A STAFF / A1 STAFF FAMILY / B DELEGAZIONI

> 3 TAGLI:
BILOCALI I TRILOCALI / QUADRILOCALI

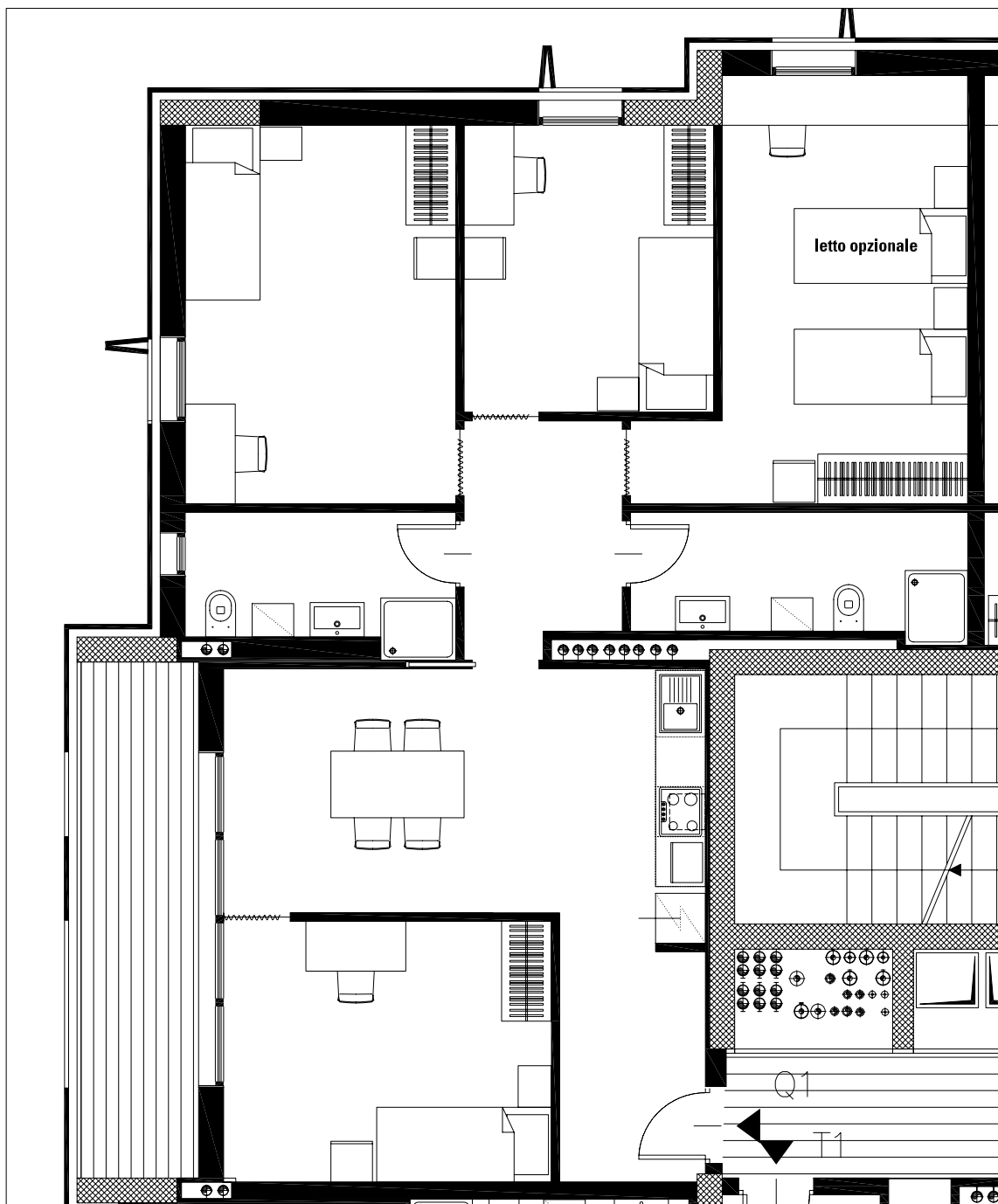
> TIPOLOGIE
. STAFF
. bilocale tipo A



> TIPOLOGIE
. STAFF
. trilocale tipo A



> TIPOLOGIE
. STAFF
. quadrilocale tipo A



> TIPOLOGIE
. STAFF
. cucina



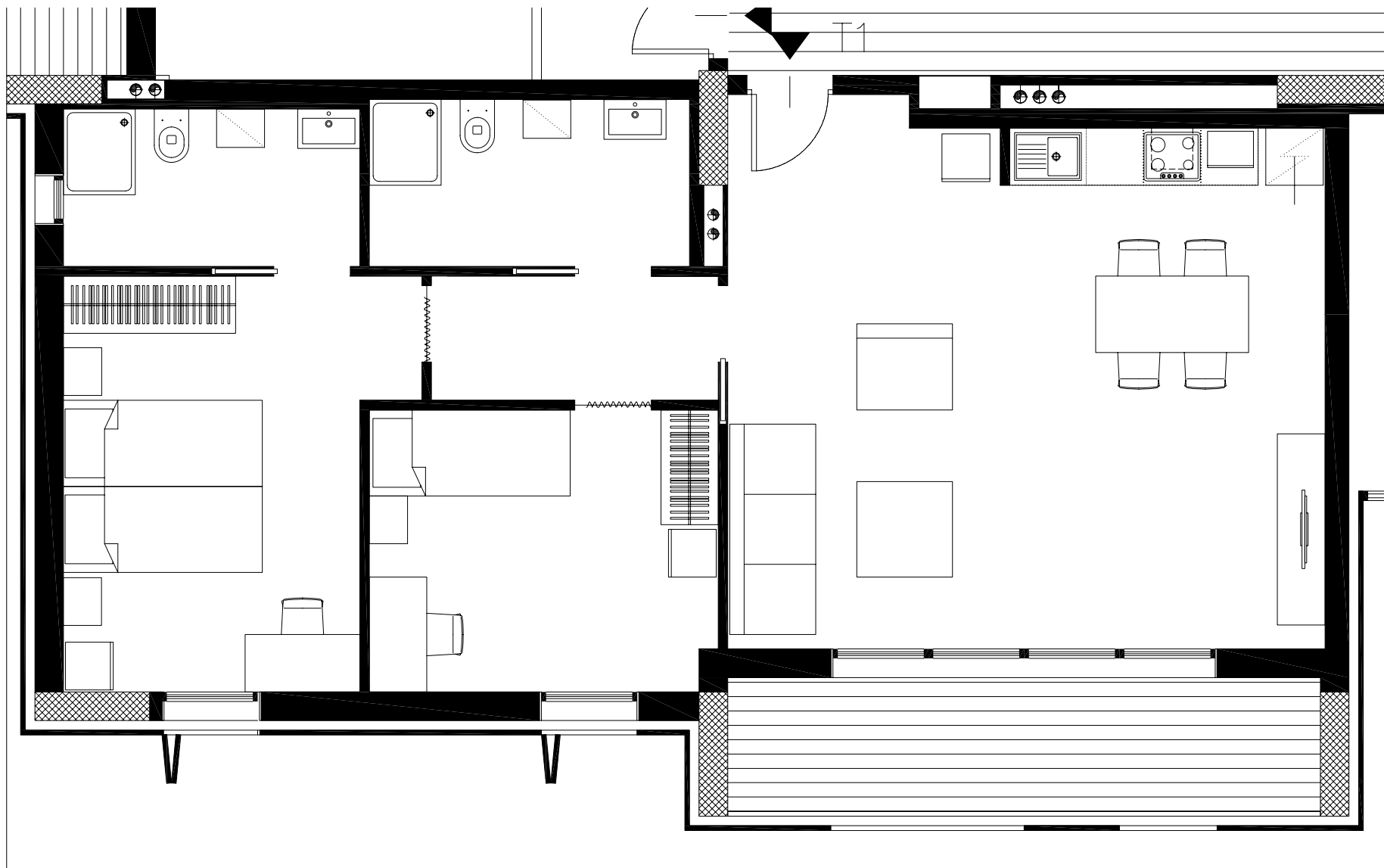
> TIPOLOGIE
. STAFF
. doppia



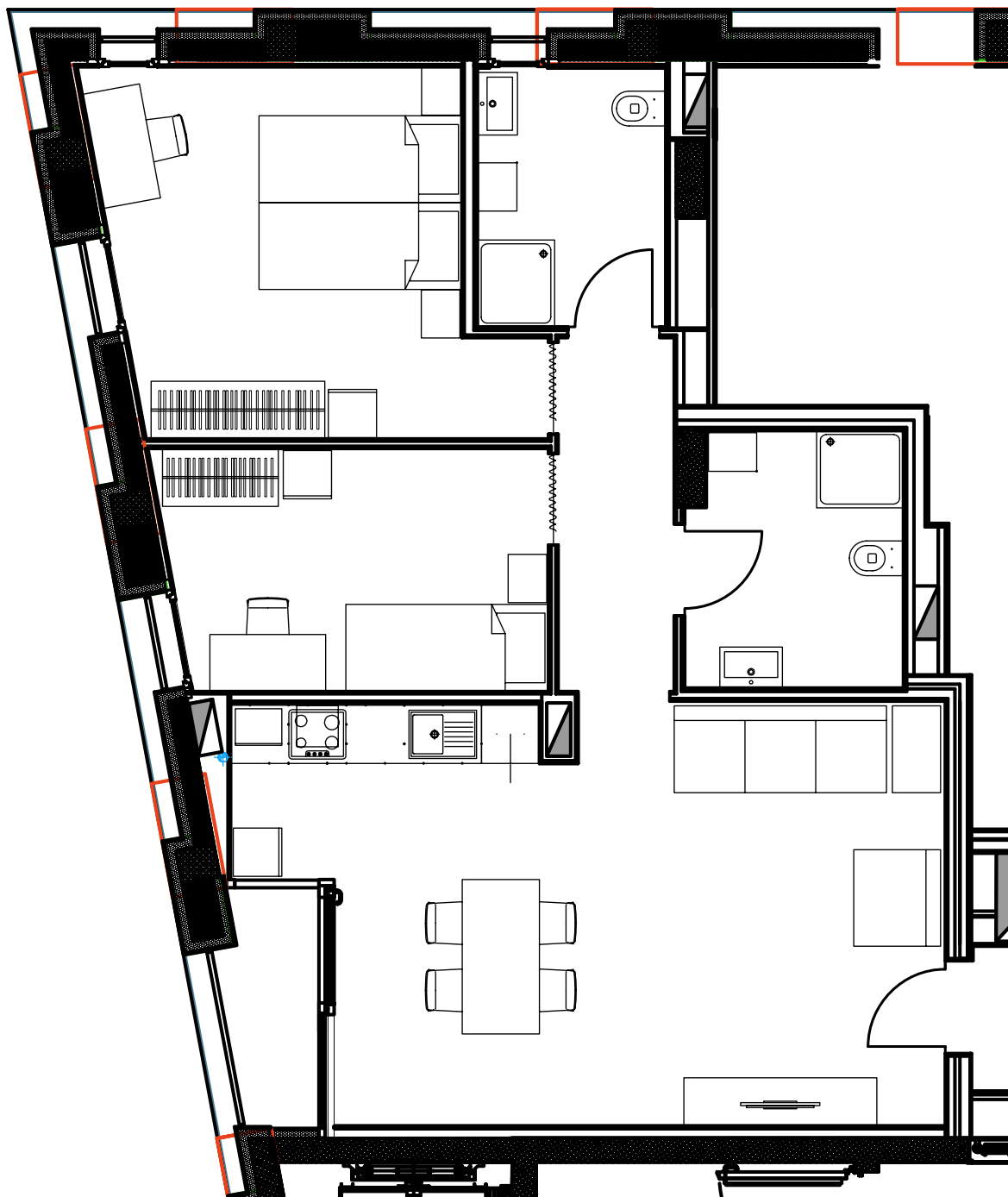
> TIPOLOGIE
. STAFF
. singola



> TIPOLOGIE
. STAFF
. trilocale tipo A1
. family



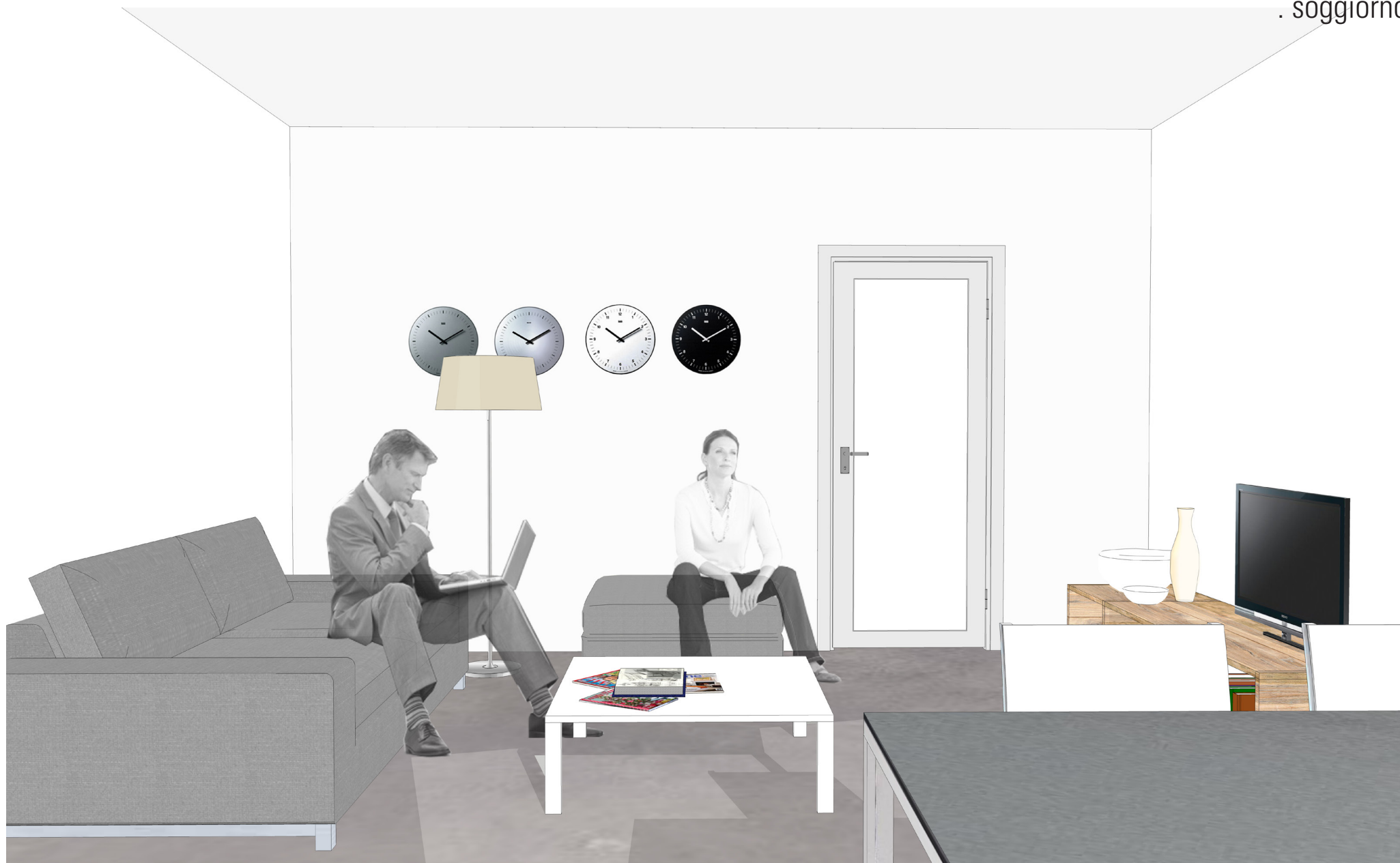
> TIPOLOGIE
. DELEGAZIONI
. trilocale tipo B



> TIPOLOGIE
. DELEGAZIONI
. cucina



> TIPOLOGIE
. DELEGAZIONI
. soggiorno



> TIPOLOGIE
. DELEGAZIONI
. doppia



> TIPOLOGIE
. DELEGAZIONI
. singola

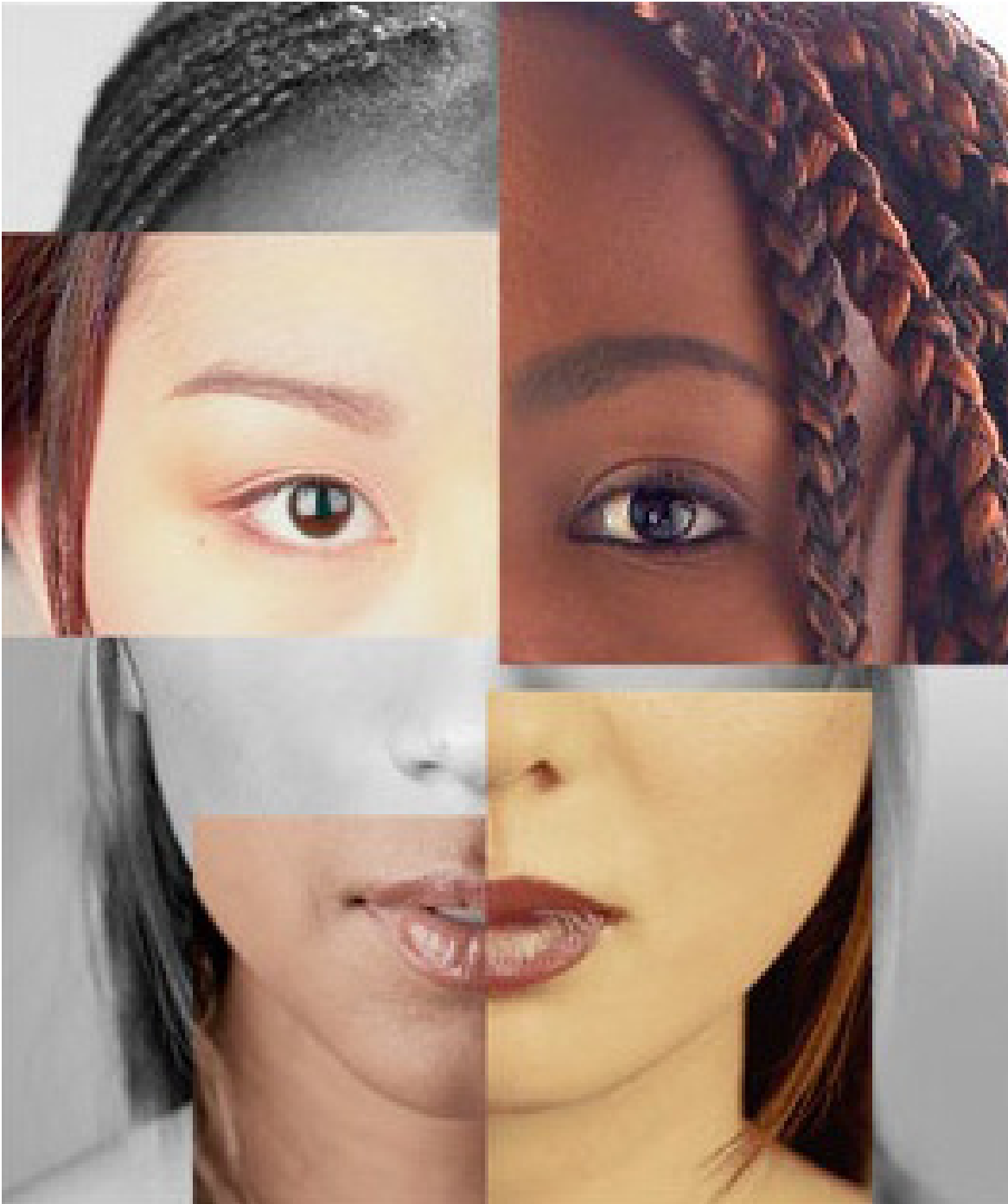


> VALORI



. ospitalità

> VALORI



. multiculturalità



. sostenibilità ambientale

A Chance to Own Fixtures, Fittings and Equipment Used by Some of The Most Famous Sporting Personalities In The World !

Solo su
www.meridiana.com
CLICCA QUI

Meridiana Fly
Meridiana Fly la
seconda compagnia
aerea italiana!



eDreams
Meridiana Fly la
seconda compagnia
aerea italiana!



Telecom Italia
Navighi in tutta
libertà senza limiti di
tempo e di orario.

**BUY
NOW**



Clicca qui

Clicca qui

Clicca qui

REMAINS OF THE GAMES™

Owned and managed by Ramler Furniture (UK) Ltd

The original F, F & E from the The London 2012 OLYMPIC GAMES



Remains Of The Games Customer Helpline: 0115 905 4103 - Lines open 24 hours a day

HOME

ABOUT

FAQ

MEDIA

WORLD PRESS

INTERNATIONAL DELIVERIES & COLLECTION

UK DELIVERIES & COLLECTION

ALL ENQUIRIES



Desk - Protocol, Lounge,
Welcome, LARGE



Notice Board - Medium



Mattress Single (Staples UK)



Clock, medium, wall

CATEGORIES

REMAINS OF THE GAMES

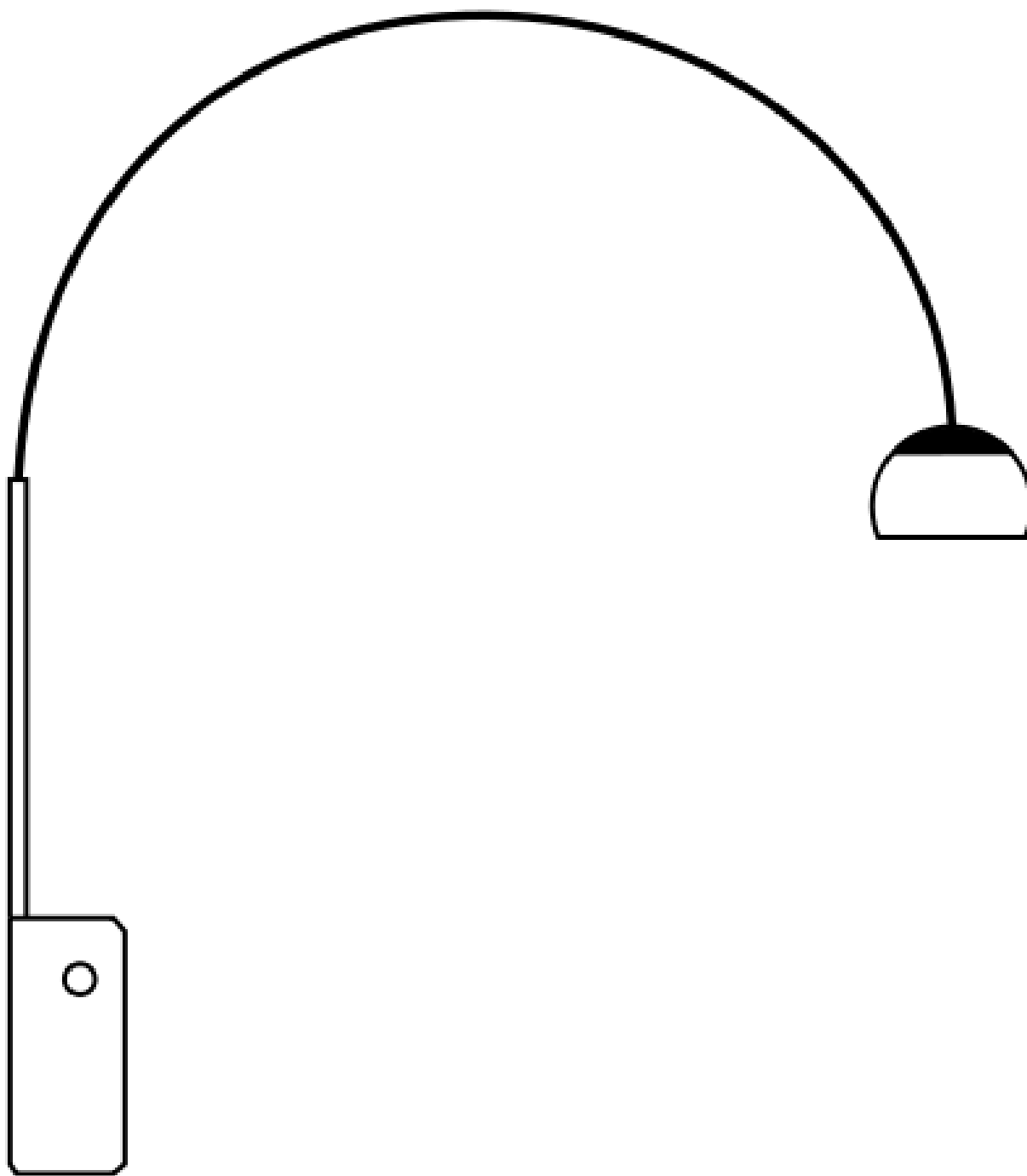
NEWS - Sunday 16th September 2012

. **sostenibilità economica**



. estetica del temporaneo

> VALORI



. made in italy

EXPO VILLAGE CASCINA MERLATA

HOTEL

HOSPITALITY FOR TEMPORARY LIVING



POLITECNICO
DI MILANO